

HTH RANGE COLLECTION





**Quality, craftsmanship and innovation.
The secret lies in precision. Having clear ideas is vital:
we need to know where we want to go and what we want to create.
And at Magni, we throw our all into accomplishing it.**

Riccardo Magni – President

Founded in 2013, Magni Telescopic Handlers has become the leader in the development of the widest and most dynamic range of telehandlers in the world, from the highest lifting rotating telescopic handlers, to the heaviest capacity, heavy-duty models, to our uniquely functioning fixed-boom construction telescopic handlers. Magni's are produced at our state-of-the-art facilities in Italy and supported by our six branches worldwide: Magni TH France, Magni UK, Magni America, Magni Deutschland, Magni SA, and Magni Asia Pacific. To offer our clients the best technical service and parts support available, we have partnered with over 300 dealers worldwide, a number that is constantly increasing. Our seven years of rapid success are just the beginning of our story; stay tuned for what comes next.

Magni: **EXPERIENCE,** **RELIABILITY AND VERSATILITY**

Magni has been recognized as the industry leader for the development of its heavy-duty telescopic handlers: the HTH range.
With 8 models offering lifting capacities from 10 to 50

metric tons, Magni HTH machines are the idea choice for those requiring optimal performance and reliability in extreme conditions. They are the undisputed champions when it comes to heavy-duty work.



HTH 10.10

HTH 16.10

HTH 20.10

HTH 24.11



HTH 27.11

HTH 30.12

HTH 35.12

HTH 50.14



HEAVY INDUSTRY

Even in a demanding environment like the oil & gas sector, Magni HTH machines outperform the competition with their unparalleled lifting capabilities.



HEAVY LOGISTICS

Inside mines and quarries, Magni HTH are the superior solution for the logistics of heavy and bulky materials. All models come standard with 4-wheel drive and are perfect for working on rough and uneven terrain providing extreme stability.



MINING & QUARRING

Magni offers a specific range of attachments for use in mines and quarries which provides the user with maximum flexibility. From replacing tires and cylinders to handling conveyor belts and coils, Magni makes the job easy.



SPECIAL PROJECTS

As with all Magni's, HTH models offer industry leading performance and safety. They are perfectly suited for work in challenging environments which require the skill and precision built into these machines.



CAB COMFORT



**REGISTERED CAB
WITH FULL VISIBILITY**

The innovative design of Magni's cab ensures unbeatable operator comfort and safety. The cab offers **full visibility** thanks to a large windshield which extends from the operator's head to their feet, allowing them to view the load even when it is suspended overhead or with the boom completely lowered.



**FOPS/ROPS
PRESSURIZED CAB**

The cab is **FOPS/ROPS** certified and equipped with an upper grill guard to guarantee operator safety even during the most delicate operations. The cabin is also airtight and fully pressurized, to ensure a safe working environment for the operator at all times.





HEATING AIR-CONDITIONING

Our HTH range is engineered to be used in any part of the world, from Siberia to the African deserts. All machines in the HTH range come standard with a **heating and air conditioning** system.



100% AIR FILTRATION

At Magni, operator safety is most important. Magni machines feature **100% air filtration** as standard on all HTH models. This enables the machines to be used in extreme conditions such as polluted or contaminated environments. You simply need to change the filter according to your requirements.



ADJUSTABLE STEERING COLUMN

Achieving the most **comfortable and ergonomic driving position** is essential while working. The Magni HTH cab allows you to easily adjust the steering wheel to the most ergonomic and comfortable position. When the column is straight, you can effortlessly access the cab. The seat can also be moved forwards and backwards to achieve the perfect support for your back.



MUG HOLDER

Recently added to the cab, you will now find a **mug holder**. This is a big hit with operators, allowing them to enjoy their morning coffee or other beverages during their breaks. The cabs standard features include a USB port which is ideal for charging smartphones and tablets.



CONTROL PANEL

MAGNI CONTROL PANEL

The user-friendly touch screen display is very intuitive for both beginner and expert operators. You can select from 12 languages and 3 screens to manage all the operational functions of the machine including transmission, steering, speed, HVAC, etc. As an option, the operator can choose to access the different pages with the joypad. In case of faults, the screen can communicate the problem

with more than 170 written fault messages. Service and diagnostic functions are accessible through the control panel. In keeping with Magni's commitment to continued improvement, the display offers the ability to be easily updated remotely from our aftersales team.

INTEGRATED DIAGNOSTICS

Fast and simple troubleshooting of electrical and electronically managed components allows for reductions in machine downtime. When a fault is detected, the system automatically shuts off any movement likely to worsen the fault and displays an alarm code which identifies the fault type.

7" TOUCHSCREEN

All Magni HTH models are equipped with a 7" touchscreen display. The machine management software installed on the touchscreen gathers all usage data and displays them conveniently over three different pages. Navigating between these pages is simple and intuitive allowing any operator, beginner or expert, to take full advantage of all the HTH features.





MAGNI COMBI TOUCH SYSTEM

The Magni Combi Touch System is an advanced and superior concept in machine management. It is easy to use for both expert and new operators and thanks to its icon-based design it is highly intuitive. The system is divided into 3 main pages, each dedicated to different functions. On the joystick in the cab each page can be easily recalled by a specific button.



1



DRIVE PAGE

All data on the transmission and its components are shown in the upper section, just like a traditional instrument cluster, whereas the lower section allows the driver to select the type of steering. This selection is facilitated by the presence of two alignment sensors. It is also possible to set the speed (tortoise/hare).

2



LOAD CHART PAGE

Magni uses the "Load Moment Indicator" system which meets all regulations for cranes. The screen displays a dynamic load chart which allows the operator to keep a constant view of the payload's center of gravity.

3



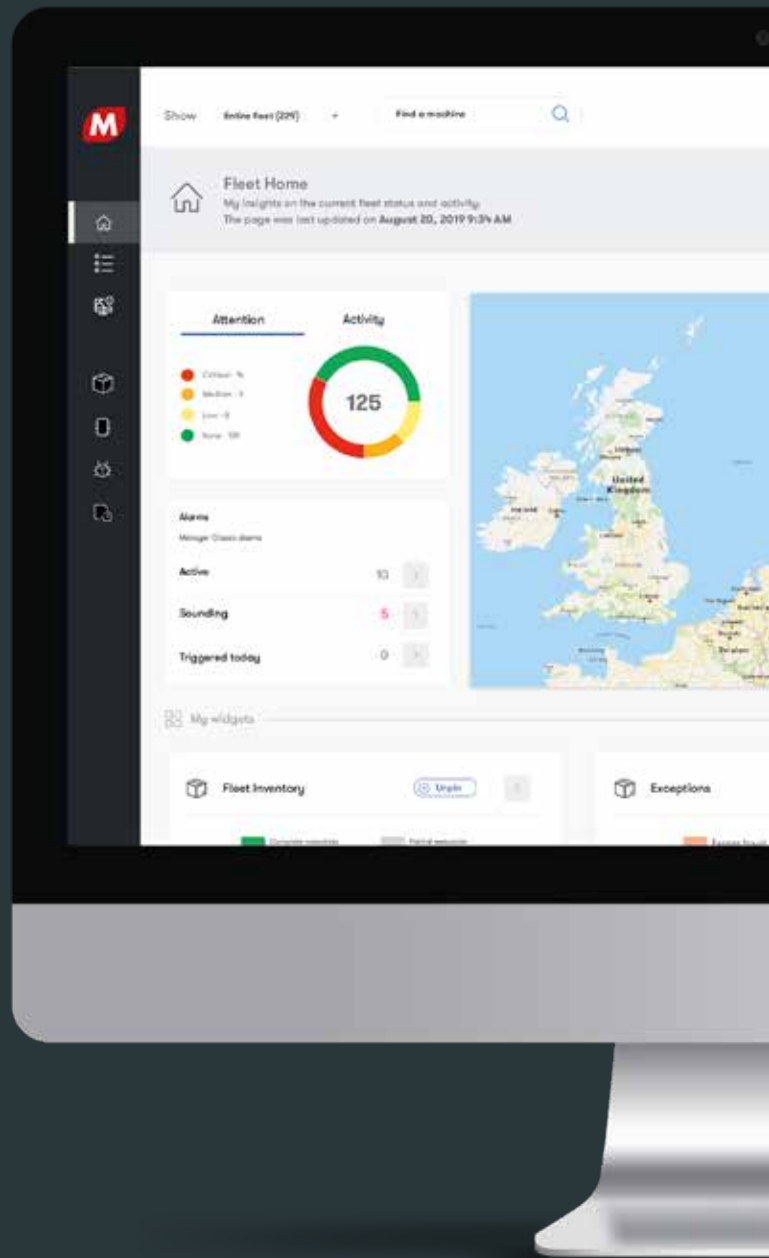
CONTROL PAGE

The upper section is used to manage basic cab commands (such as temperature and ventilation), the middle section is dedicated to the machine lights, while the lower section displays the various available options for switching from the cab controls to remote control.



The New Fleet Management

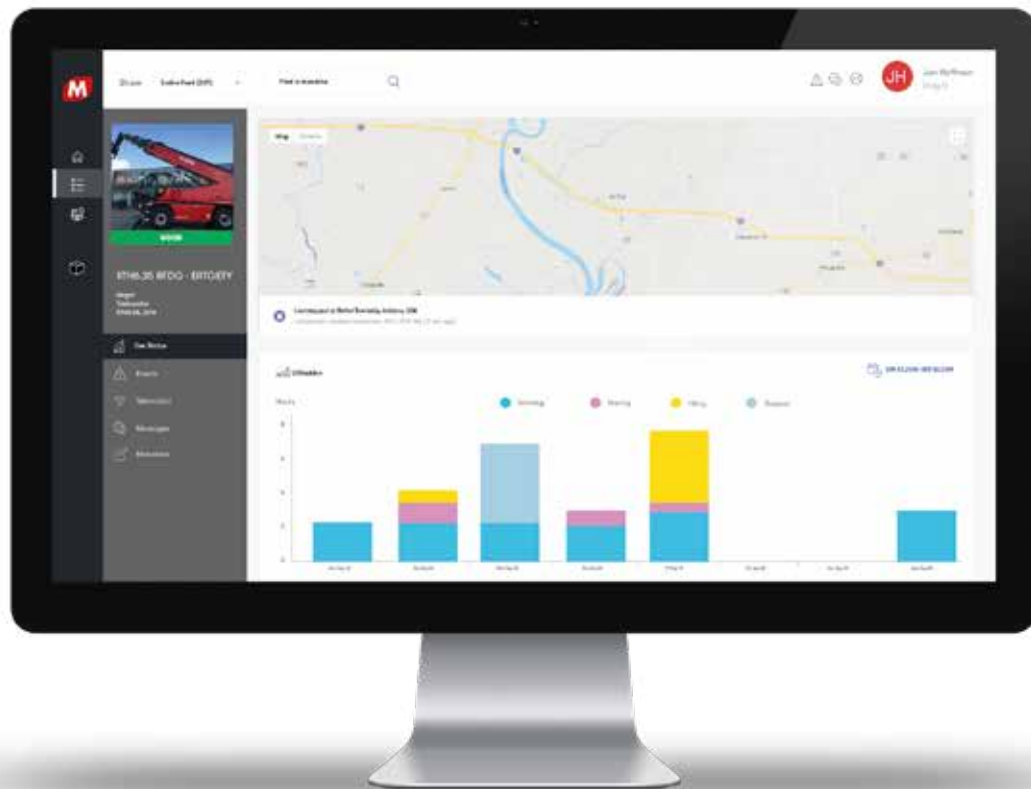
Have your fleet at a fingertip. Enjoy MyMagni free of charge for the first three years on all new machines.



Discover how the new GPS system that Magni Telescopic Handlers fits on each machine can help you manage and monitor your fleet. A total overview that enables you to map and track every movement of your fleet, and displays the most critical items on your dashboard.



EFFICIENT: Monitoring of machine hours and service alerts improve maintenance planning. Machine error warnings and maintenance history records are also available. Technical alarms and maintenance data help to keep your fleet running and in perfect condition at all times. Drive down costs and drive up productivity.



MyMagni Desktop

FLEET HOME

This page displays the exact position of each unit and its operating status, via a color legend.

CLASSIC

This is an embedded section that provides access to standard modules such as reports, servicing, alarms and access control.

FLEET INVENTORY

Here you can easily segment and chart your fleet, helping you make informed business decisions.

SEARCH FOR A UNIT

Here you can find all the relevant information, such as geolocation and GPS status, in real time simply by setting the appropriate filters available on the page.

CAN BUS DATA

This is the landing page where you can check daily usage, CAN BUS data, and even investigate any current active events for all the machines in your fleet.

TOP FEATURES:

ENGINE

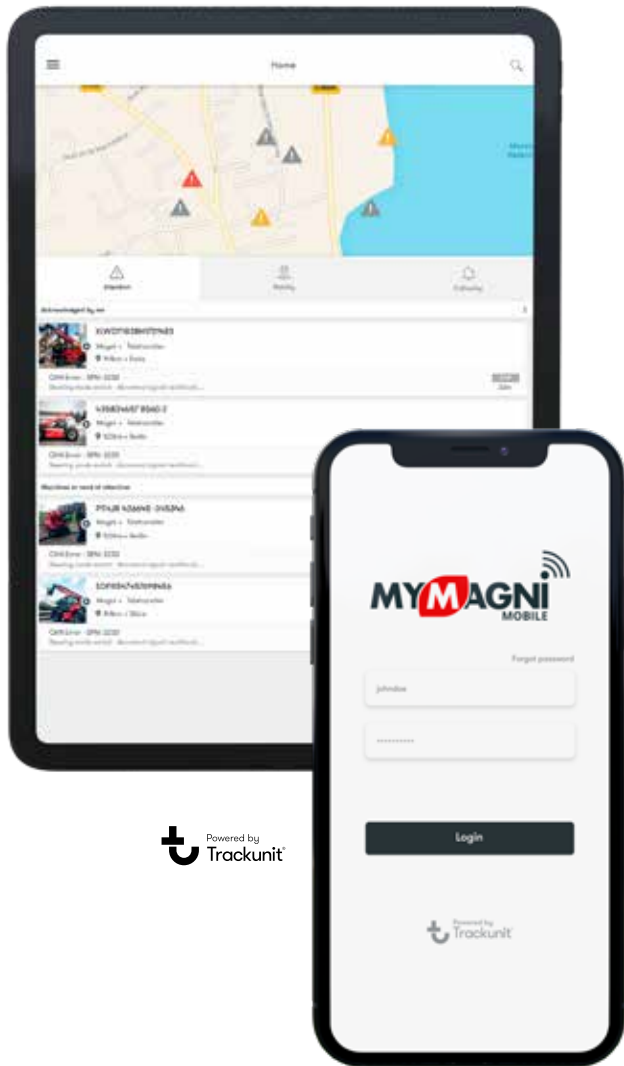


- Engine Hours / Total Vehicle Hours
- Engine Total Fuel Used
- Engine Coolant Temperature
- Engine Oil Temperature
- Engine Oil Level & Pressure

SAFETY



- Alarm Code Error from LMI
- Machine Alarm SPN
- FMI Error Code of Engine Alarm
- Key Bypass



MyMagni Mobile

This is a light version designed for mobile fleet management. This app helps you identify machines in need of immediate care, forestalling potential breakdowns. The events engine collects and displays all important machine events such as CAN fault codes, pre-checks and service, damage and even overdue service.

CHAT: this message center helps keep track of ongoing communication between you and your customer. You can also share high-quality pictures and video content.

MyMagni is available on both the Apple Store and Google Play Store. You can stay connected to your fleet with a simple tap of your smartphone's screen. Resolve issues. Limit downtime.

Have fun with the MyMagni Mobile app!



COMPLIANT WITH:

CE - compliant with the RED Directive 2014/53/EU as stated in the EU Declaration of Conformity.

FCC and IC - the product contains radio transmitters certified in accordance with the relevant parts of CFR 47 and Industry Canada rules and regulations.

PTCRB - certified in accordance with North American Permanent Reference Document 03 for cellular communication and radio resource management protocols.

Automotive - E1-certified as an Electronic Sub-Assembly (ESA) for installation in vehicles according to United Nations (UN) R10.

Environmental class - environmentally tested for use on heavy trucks (SAE J1455) covering vehicles and off-road machinery. Enclosure protection class: IP67.

LOAD / BOOM POSITION



- Current boom length & height
- Actual load & current max. load
- Machine load
- Max load capacity
- Boom in motion

MAINTENANCE

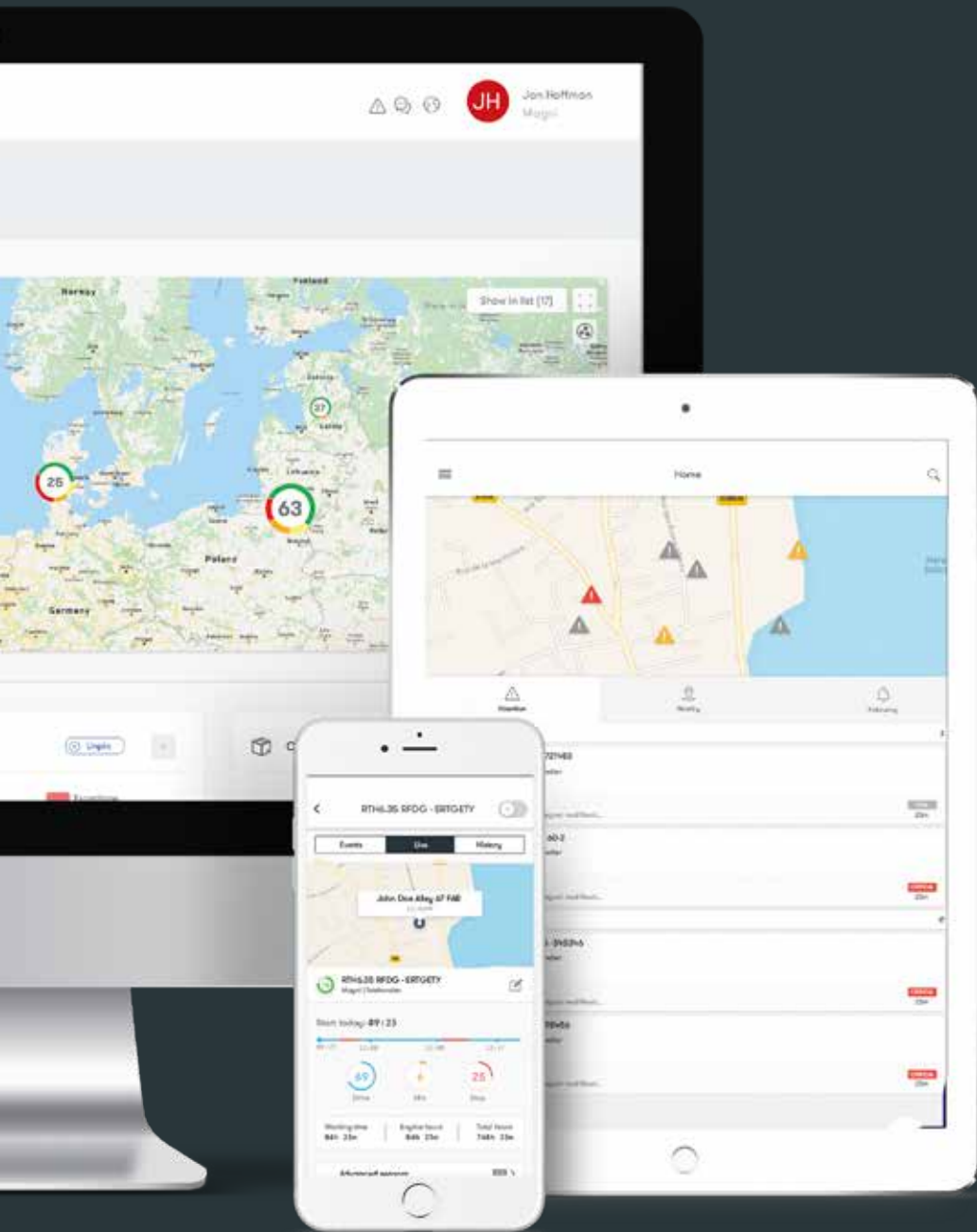


- Schedule your maintenance
- Hours left to maintenance
- Check oil level
- Check filter wear

MACHINE CHECK-UP



- Vehicle speed and direction
- Gear engaged & DEF level
- Working mode & tool configuration
- Post-treatment diesel exhaust fluid tank level
- Battery voltage



SMART: A simple and intuitive interface, optimized for both desktops and portable devices. Each page displays different sets of data, and you can easily navigate between them via a menu. MyMagni allows you to connect to your fleet anywhere in the world.

SAFE: Always keep an eye on your fleet. Real-time geo-fence alarms alert you when the machine leaves a specific operating area, and also notify you of unauthorized use of the machine. Real-time curfew and tow alerts also notify you if a machine is switched on or moved illegally. Safety warnings alert you of malfunctions and safety-related defects.

KEY CHARACTERISTICS

SAFE, STRONG AND RELIABLE

Our Heavy-duty telescopic handlers combine innovation and new technologies to offer high-end performance in each application. The specific research of new materials and electronic components to produce powerful and durable machines is part of the unique approach of our

R&D team. At Magni, we like to have total control over production, from the supply of raw materials to the production of final product, so we can guarantee top-class standards.



MAX. LIFTING CAPACITY:
22,000 to 110,230 lbs



MAX. LIFTING HEIGHT:
33 to 46 ft



GRADEABILITY:
from 34°
to 58°



DRAWBAR PULL
from 88 kN
to 390 kN



OPTIMUM LIFTING PERFORMANCE





CAPACITY & HEIGHT

Model	Max. Capacity	Max. Height
HTH 10.10	22,000 lbs	31.2'
HTH 16.10	35,280 lbs	31.1'
HTH 20.10	44,100 lbs	32'
HTH 24.11	53,200 lbs	34.6'
HTH 27.11	59,500 lbs	35.8'
HTH 30.12	66,140 lbs	37' 5"
HTH 35.12	77,000 lbs	37' 5"
HTH 50.14	110,000 lbs	46'



WARRANTY

All HTH models feature a 24-month parts and service warranty*.

The Magni Warranty requires that from the time it is new, your machine is to be regularly serviced by an authorized Magni dealer.

Our warranty covers any defects attributable to faulty materials or workmanship for a maximum of 2 years or 2,000 machine working hours.

Our Aftersales Team and Spare Parts Department are always ready to support you, every day of the year.

*Consumables are excluded from the warranty.



GROUND CLEARANCE

Model Name	Ground clearance
HTH 10.10	14.6"
HTH 16.10	17.3"
HTH 20.10	15.7"
HTH 24.11	16.9"
HTH 27.11	20.9"
HTH 30.12	21.7"
HTH 35.12	21.7"
HTH 50.14	24.4"



CAPACITY AT MAX REACH

Model Name	Max. capacity	Max. reach
HTH 10.10	5,732 lbs	16.4'
HTH 16.10	11,023 lbs	13.9'
HTH 20.10	14,330 lbs	16.7'
HTH 24.11	15,873 lbs	18.7'
HTH 27.11	16,534 lbs	21.3'
HTH 30.12	17,637 lbs	22.6'
HTH 35.12	19,841 lbs	22.6'
HTH 50.14	28,660 lbs	25.9'

PERFORMANCE ON TIRES



$\pm 5^\circ / \pm 10^\circ$



0°



$\pm 5^\circ / \pm 10^\circ$

LEVELING SYSTEM ON TIRES

The leveling system on tires is standard for all models in the HTH range, and helps the operator to work in total safety even on irregular terrain.

This mechanism lets the driver adjust the machine leveling and have the full load chart for all operations, even with ground inclinations which would normally affect the lifting performance.

Magni has also introduced an **additional** leveling safety device: if the operator tries to manually correct the inclination of the machine on uneven terrain, the system detects the machine inclination and only allows compensation to be performed in the correct direction, preventing any movement which could worsen the situation.



OFF-ROAD

The powerful hydrostatic transmission provides each wheel with all the power necessary to tackle the roughest terrain and the toughest slopes. Equipped with four-wheel drive, two forward/reverse gears and a rear tilting axle,

the HTH range guarantees perfect stability and maximum grip. In addition, the impressive ground clearance allows the machine to overcome any obstacle.

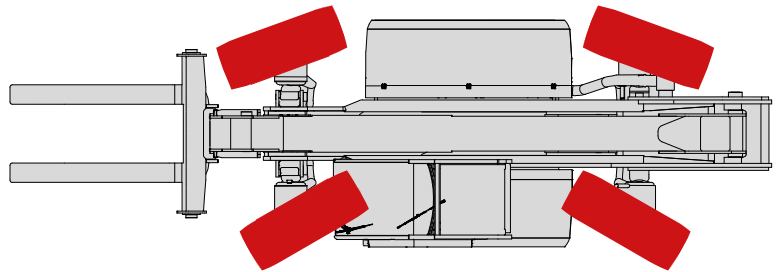


THREE TYPES OF STEERING

Magni provides you with the ability to choose the best movement according to the working environment as a standard feature. For all HTH machines you can choose the steering type that best suits your tasks.

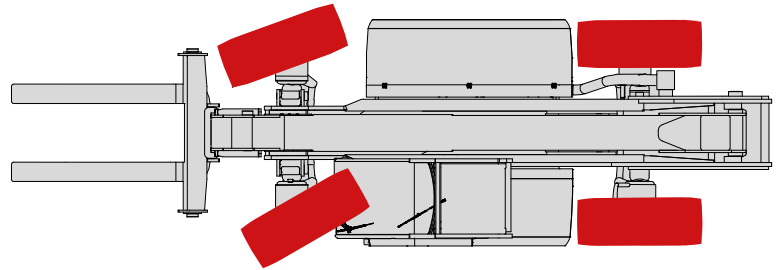
1

Round steering (4-wheel):
offering an improved turning
circle for moving in tight spaces



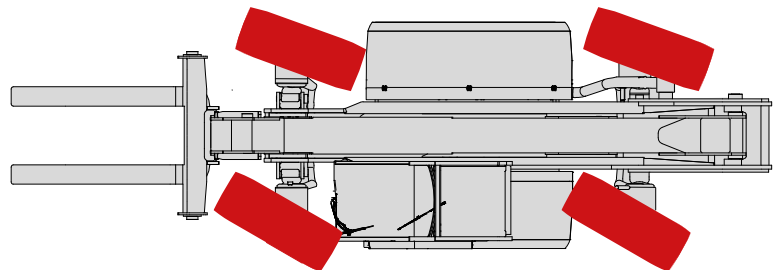
2

Front steering:
for on-road driving



3

Crab steering:
allows the machine
to approach from the side



TECHNICAL SPECIFICATIONS

TRANSMISSION

On each model, the transmission is different and has been chosen to provide the best performance while working.

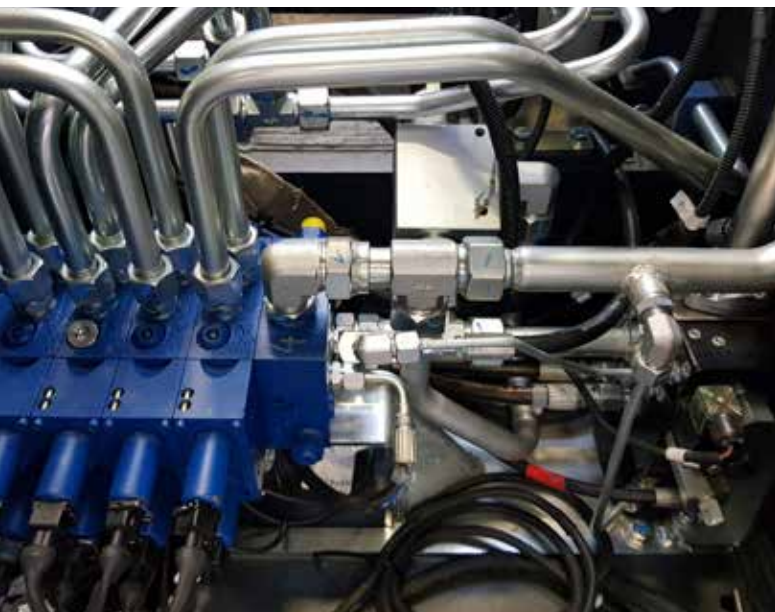
The **HTH 30.12**, **HTH 35.12** and **HTH 50.14** are equipped with a transmission that is a heavy duty automatic shift box type power shift with 3 speeds electronically synchronized. It is a 2WD transmission with automatic engagement of 4WD in case of slippery conditions.

For **HTH 24.11** and **HTH 27.11**, the transmission is hydrostatic and electronically controlled with a central self-locking differential, to prevent slips and problem with adherence to the ground.

For **HTH 10.10**, **HTH 16.10** and **HTH 20.10** the transmission is hydrostatic and electronically controlled made of a variable displacement pump for an accurate handling of the load.



HTH 30.12 / 35.12 / 50.14



The hydraulic circuit is Load Sensing with 350 bars of working pressure; it is composed by a 1/s high precision pump, two electro proportional joysticks and a SIL 2 main valve.

The system responds to the European regulation EN13489 regarding the electrical controls. The electronic management of the hydraulic circuit automatically selects the best engine rpm to provide the best performance. This results in a reduction in fuel consumption on long working cycles. With the Magni software it is possible to manage the flow sharing, and therefore ensuring safety and precision while performing up to 4 hydraulic movements simultaneously.

AXLES

The machines are equipped with heavy duty axles with hydraulic servo-assisted multidisc brake in oil bath, with heavy duty 4 stage epicyclic reduction.



HTH 24.11 / 27.11 / 20.10



HTH 10.10 / 16.10

**STAGE
-IV-
ENGINE** **ENGINE
TYPE**

Volvo and Deutz will be our partner for the whole HTH range and will provide reliable and strong performances. The smallest model HTH 10.10 is equipped with Deutz Tier 4 final engine with 100kW power to perform smoothly every heavy logistics task.

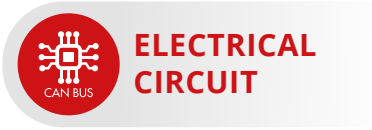
Models HTH 16.10 and HTH 20.10 will be supplied with a 160kW Volvo Tier 4 final engine, whereas bigger models HTH 24.11 and 27.11 will be equipped with 175 kW Volvo Tier 4 final engine.

The biggest of the range, up to the HTH 50.14 will be equipped with the powerful 235 kW Volvo Tier 4 final engine.

This change represents a great step forward for a more sustainable future and Magni has certainly not missed this opportunity!

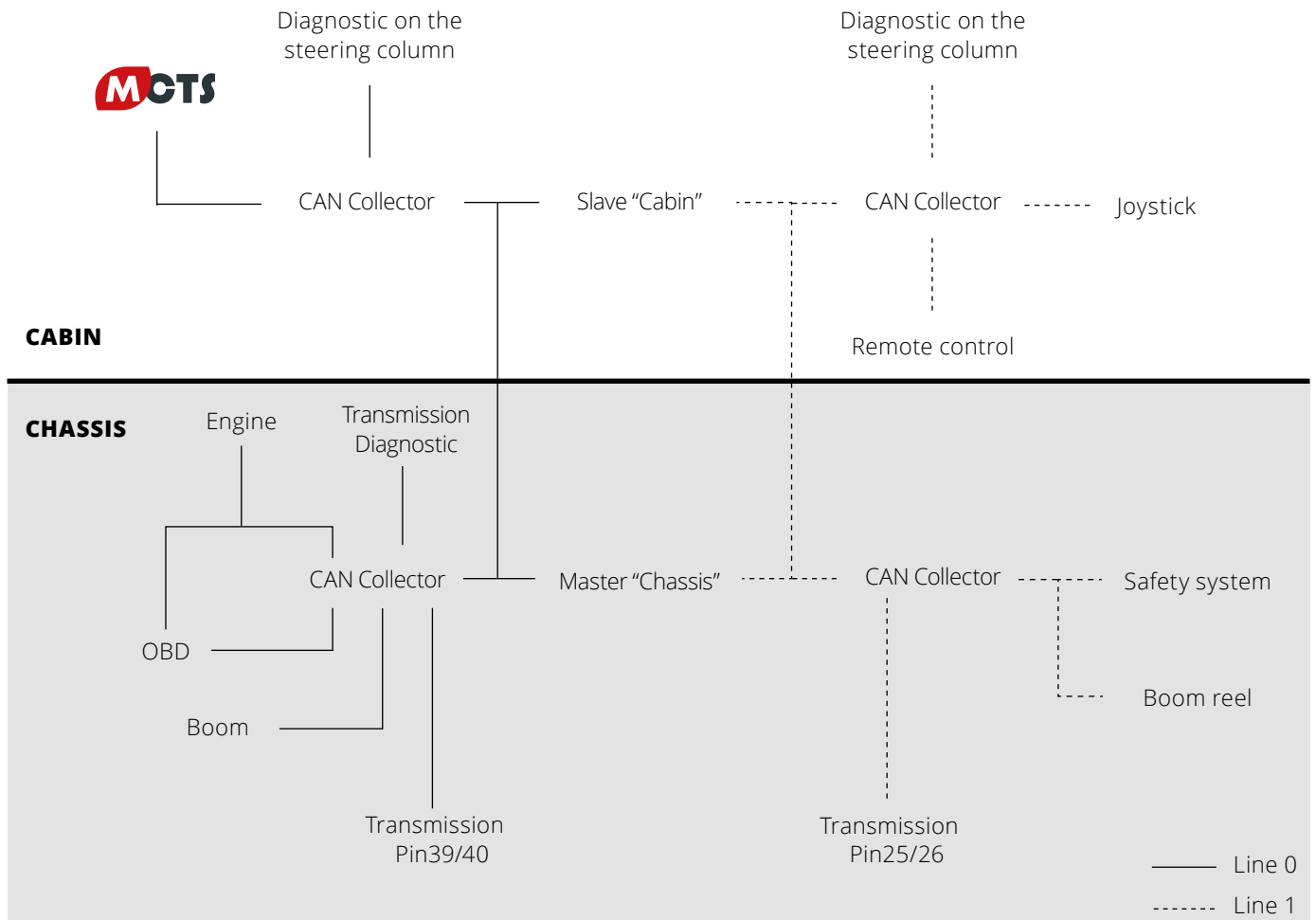


TECHNICAL SPECIFICATIONS



The **IP67-rated** electric circuit is protected against water and dust ingress, and runs at 24V. The HTH range is equipped with a **CAN BUS**, which handles all data relating to the electronic components. All information regarding the engine, transmission,

hydraulic system and load moment indicator is shown on the touchscreen display. CAN BUS technology requires around a third less wiring, reducing the risk of faults on the circuit and increasing overall reliability of the machine.

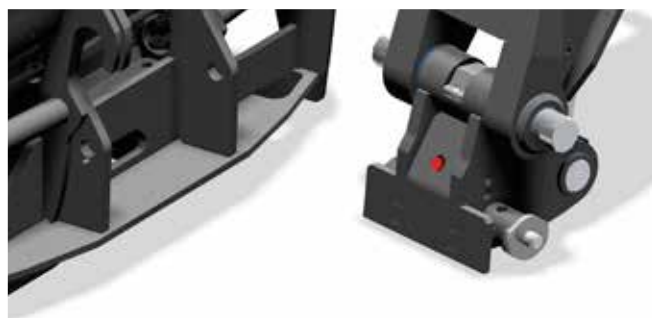




TECHNICAL SPECIFICATIONS



The automatic attachment recognition system - RFID - is available on every model of the HTH range. The attachment, once mounted on the machine, is automatically recognized by the machine and automatically shows up on the touch screen displaying the correct load diagram and prepares the load limitation system. This system on HTH models is much safer and prevents the risk of choosing a wrong attachment.



BOOM STRUCTURE

The boom is constructed from high-strength steel allowing it to be exceptionally strong yet light in weight. This high-performance design provides industry leading, high capacity lifting with superior structural rigidity resulting in the precise handling of heavy loads. To protect the hydraulic hoses from possible collisions with the external working environment, we have placed them inside of the boom.

To achieve greater reliability, we have designed special ducts, fixed to the inside of the boom, to support and guide the mobile hoses during extension and retraction. In addition, we have fused the individual hoses together to form a single pipeline resulting in increased stability, safety and control versus a conventional loose hose design.



TECHNICAL SPECIFICATIONS

LOAD MOMENT INDICATOR

All Magni telehandlers are equipped with a load limiting system that automatically loads the chart for each attachment and continuously analyzes the position of the load in space in each operation. The touch screen display in the cab dynamically shows the position of the

load according to the operator movements. If an overload occurs, the system interrupts the movement immediately, allowing only the retraction and lowering of the boom.



A



Potentiometer for angle and length of boom detection with redundant safety.

B



Dynamic representation of all the collected data on the touch screen for the operator.

C



Detection of load weight through 4 pressure transducers: 2 placed on lifting cylinders and 2 on compensation cylinder.

D



Flashing beacon.



STANDARD ATTACHMENTS

In order to achieve the full potential of HTH machines, Magni offers a complete line of dynamic attachments. They are fully interchangeable* allowing

the machines to perform multiple tasks. This serves to significantly enhance the value of all Magni machines.



Fork carriage
- standard
- with positioner
- with positioner and side shift



Bucket



Winch



Hook

*Excluding HTH 10.10



MINING & QUARRIES SPECIAL ATTACHMENTS

Changing tires and cylinders or moving and positioning conveyor belts and coils is made super easy with Magni Mining & Quarry special attachments. Due

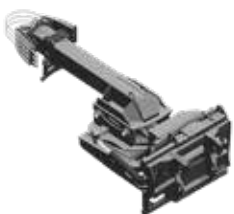
to the unique demands in these industries, each attachment is designed and engineered to deliver superior performance.



Wheel hub Tool



Cylinder handler



Suspension cylinder tool



Conveyor belts maintenance



Tyre handler



Coils handler



HTH 10.10

MACHINE MODEL	Maximum lifting capacity	22,046 lbs
	Load center	1.96'
	Maximum lifting height	31.2'
	Maximum reach	16.6'
ENGINE	Type	Deutz TCD 3,6 L4 - Tier 4f
	Rated power	100 kW (134 hp) @ 2,200 rpm
	Maximum torque	500 Nm @ 1,600 rpm
	Displacement	0.95 US gal
	Cylinders	4 in line
	Engine configuration	Turbocharged direct injection diesel
	Cooling system	Water - intercooler
CAB	FOPS-ROPS tested hermetic cab with protectors	•
	Front, rear and upper wiper	•
	Headlights for road circulation, flashing beacon	•
	Rear view mirrors	•
	Heating - Air conditioning	•
CONTROLS	Multi-function electro proportional joystick	•
	Heavy Duty with epicyclic reduction	•
AXLES AND BRAKES	One steering cylinders each axle	•
	Levelling correction front axle	+ 8° on the right and + 8° on the left
	3 types of steering	- with front steering - with round steer - with crab steering
	Tilting rear axle	•
	Hydraulic servo-assisted multidisc brake in oil bath on both axles, with double circuit	•
	Negative parking brake	•
	Heavy Duty with epicyclic reduction	•
PERFORMANCE	Tyre size	445/65 - R22,5 ** two each axle, driving and steering
	Max. travel speed	25 Mph
	Drawbar pull	84 kN
	Gradeability	66%
WEIGHTS	Turning radius (at wheels)	13.5'
	Total unladen	28,880 lbs
	Front axle unladen (boom retracted and lowered)	10,141 lbs
	Rear axle unladen (boom retracted and lowered)	18,739 lbs
TRANSMISSION	Hydrostatics	Rexroth / Danfoss
	Variable displacement hydrostatic pump with electronic control	•
	Variable displacement hydrostatic motor	One
HYDRAULIC CIRCUIT	Gearbox	Gearbox with 2 speeds forward / reverse
	Load sensing piston pump	•
	Circuit at 350 bar	•
	Proportional hydraulic electrovalve	Danfoss
	Suction and return line filters	•
TANKS CAPACITIES	High pressure flexible hoses	•
	Diesel fuel tank	51.5 US gal
	AdBlue	2.6 US gal
	Hydraulic fluid	50.2 US gal
	Engine oil	2.4 US gal
SAFETY	Cooliant	5.3 US gal
	Electronic safety system which controls the load with definition of the lifted load, radius and comparison with the diagrams stored	•
	Block of aggravating movements of the load	•
	Safety valves on cylinders	•

HTH 16.10	HTH 20.10	HTH 24.11
35,274 lbs	44,090 lbs	52,911 lbs
1.96'	1.96'	2.95'
31.8'	31.8'	34.5'
16.4'	16.7'	18.7'
Volvo TAD572 VE - Tier 4f	Volvo TAD572 VE - Tier 4f	Volvo TAD572 VE - Tier 4f
160 kW (218 hp) @ 2,200 rpm	160 kW (218 hp) @ 2,200 rpm	160 kW (218 hp) @ 2,200 rpm
910 Nm @ 1,410 rpm	910 Nm @ 1,410 rpm	910 Nm @ 1,410 rpm
1.35 US gal	1.35 US gal	1.35 US gal
4 in line	4 in line	4 in line
Turbocharged diesel direct injection common rail	Turbocharged diesel direct injection common rail	Turbocharged diesel direct injection common rail
Water - intercooler	Water - intercooler	Water - intercooler
•	•	•
•	•	•
•	•	•
•	•	•
•	•	•
•	•	•
•	•	•
•	•	•
+ 8° on the right and + 8° on the left	+ 8° on the right and + 8° on the left	+ 10° on the right and + 10° on the left
- with front steering - with round steer - with crab steering	- with front steering - with round steer - with crab steering	- with front steering - with round steer - with crab steering
•	•	•
•	•	•
•	•	•
•	•	•
16,00 - R25 ** two each axle, driving and steering	16,00 - R25 ** two each axle, driving and steering	18,00 - R25 ** two each axle, driving and steering
15.5 Mph	15.5 Mph	15.5 Mph
113 kN	156 kN	184 kN
60%	66%	67%
16.6'	18.8'	17.7'
43,329 lbs	52,911 lbs	65,477 lbs
15,873 lbs	17,637 lbs	20,283 lbs
26,455 lbs	35,274 lbs	45,195 lbs
Rexroth / Danfoss	Rexroth / Danfoss	Rexroth / Danfoss
•	•	•
One	One	One
Gearbox with 2 speeds forward / reverse	Gearbox with 2 speeds forward / reverse	Gearbox with 2 speeds forward / reverse Differential hydraulic locking
•	•	•
•	•	•
Danfoss	Bosch/Bucher	Bucher
•	•	•
•	•	•
71.3 US gal	71.3 US gal	51.5 US gal
10.6 US gal	10.6 US gal	10.6 US gal
51.5 US gal	51.5 US gal	58.1 US gal
4.2 US gal	4.2 US gal	4.2 US gal
10.6 US gal	10.6 US gal	10.6 US gal
•	•	•
•	•	•
•	•	•

• = included

HTH 27.11

MACHINE MODEL	Maximum lifting capacity	59,525 lbs
	Load center	3.93'
	Maximum lifting height	35.8'
	Maximum reach	21.7'
ENGINE	Type	Volvo TAD572 VE - Tier4f
	Rated power	160 kW (218 hp) @ 2,200 rpm
	Maximum torque	910 Nm @ 1,450 rpm
	Displacement	1.35 US gal
	Cylinders	4 in line
	Engine configuration	Diesel direct injection common rail
	Cooling system	Water - intercooler
CAB	FOPS-ROPS tested hermetic cab with protectors	•
	Front, rear and upper wiper	•
	Headlights for road circulation, flashing beacon	•
	Rear view mirrors	•
	Heating - Air conditioning	•
CONTROLS	Multi-function electro proportional joystick	•
	Heavy Duty with epicyclic reduction	•
	One steering cylinders each axle	•
	Levelling correction front axle	+ 5° on the right and + 5° on the left
AXLES AND BRAKES	3 types of steering	- with front steering - with round steer - with crab steering
	Tilting rear axle	•
	Hydraulic servo-assisted multidisc brake in oil bath on both axles, with double circuit	•
	Negative parking brake	•
	Heavy Duty with epicyclic reduction	•
	Tyre size	26,5 - R25 ** two each axle, driving and steering
PERFORMANCE	Max. travel speed	15.5 Mph
	Drawbar pull	194 kN
	Gradeability	56%
	Turning radius (at wheels)	28'
WEIGHTS	Total unladen	78,264 lbs
	Front axle unladen (boom retracted and lowered)	27,999 lbs
	Rear axle unladen (boom retracted and lowered)	50,265 lbs
TRANSMISSION	Hydrostatics	Rexroth / Danfoss
	Variable displacement hydrostatic pump with electronic control	•
	Variable displacement hydrostatic motor	One
	Gearbox	Gearbox with 2 speeds forward / reverse Differential hydraulic locking
HYDRAULIC CIRCUIT	Load sensing piston pump	•
	Circuit at 350 bar	•
	Proportional hydraulic electrovalve	Bucher
	Suction and return line filters	•
	High pressure flexible hoses	•
TANKS CAPACITIES	Diesel fuel tank	89.8 US gal
	AdBlue	10.6 US gal
	Hydraulic fluid	93.8 US gal
	Engine oil	7.1 US gal
	Cooliant	13.2 US gal
SAFETY	Electronic safety system which controls the load with definition of the lifted load, radius and comparison with the diagrams stored	•
	Block of aggravating movements of the load	•
	Safety valves on cylinders	•

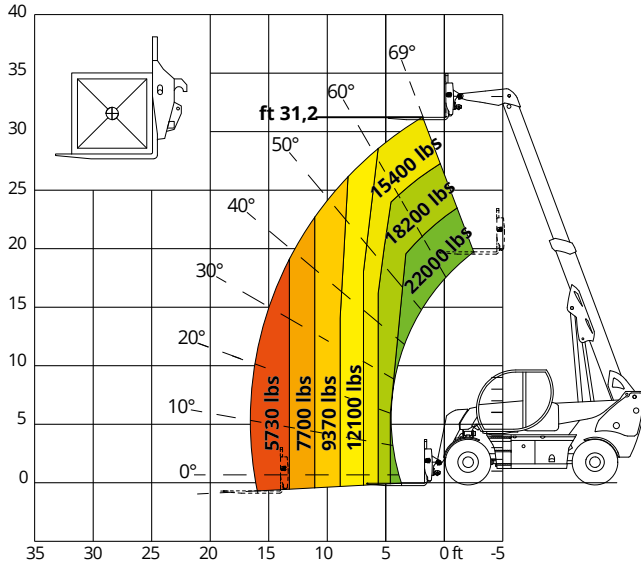
HTH 30.12	HTH 35.12	HTH 50.14
66,139 lbs	77,162 lbs	110,231 lbs
3.93'	3.93'	3.93'
37.4'	37.4'	45.9'
22.6'	22.6'	26.2'
Volvo TAD873VE - Tier 4f	Volvo TAD873VE - Tier 4f	Volvo TAD873VE - Tier 4f
235 kW (320 hp) @ 2200 rpm	235 kW (320 hp) @ 2200 rpm	235 kW (320 hp) @ 2200 rpm
1,310 Nm @ 1,450 rpm	1,310 Nm @ 1,450 rpm	1,310 Nm @ 1,450 rpm
2.0 US gal	2.0 US gal	7,7 l
4 in line	4 in line	4 in line
Turbocharged diesel direct injection common rail	Turbocharged diesel direct injection common rail	Turbocharged diesel direct injection common rail
Water - intercooler	Water - intercooler	Water - intercooler
•	•	•
•	•	•
•	•	•
•	•	•
•	•	•
•	•	•
•	•	•
•	•	•
+ 5° on the right and + 5° on the left	+ 5° on the right and + 5° on the left	+ 5° on the right and + 5° on the left
- with front steering	- with front steering	- with front steering
- with round steer	- with round steer	- with round steer
- with crab steering	- with crab steering	- with crab steering
•	•	•
•	•	•
•	•	•
•	•	•
29,5 - R25 ** two each axle, driving and steering 24.00-35**optional	29,5 - R25 ** two each axle, driving and steering	29,5 - R25 ** two each axle, driving and steering
15.5 Mph	15.5 Mph	12.4 Mph
365 kN	365 kN	390 kN
54%	45%	50%
91.9'	31.9'	31.9'
90,169 lbs	98,767 lbs	143,300 lbs
41,226 lbs	32,628 lbs	61,729 lbs
48,943 lbs	66,139 lbs	88,185 lbs
Rexroth	Rexroth	Rexroth
•	•	•
Two	Two	Two
Hydraulic gearbox with 3 speeds powershift forward / reverse Differential hydraulic locking	Hydraulic gearbox with 3 speeds powershift forward / reverse Differential hydraulic locking	Hydraulic gearbox with 3 speeds powershift forward / reverse Differential hydraulic locking
•	•	•
•	•	•
Bucher	Bucher	•
•	•	•
•	•	•
89.8 US gal	89.8 US gal	not available
10.6 US gal	10.6 US gal	not available
93.8 US gal	93.8 US gal	not available
7.1 US gal	7.1 US gal	not available
13.2 US gal	13.2 US gal	not available
•	•	•
•	•	•
•	•	•

• = included

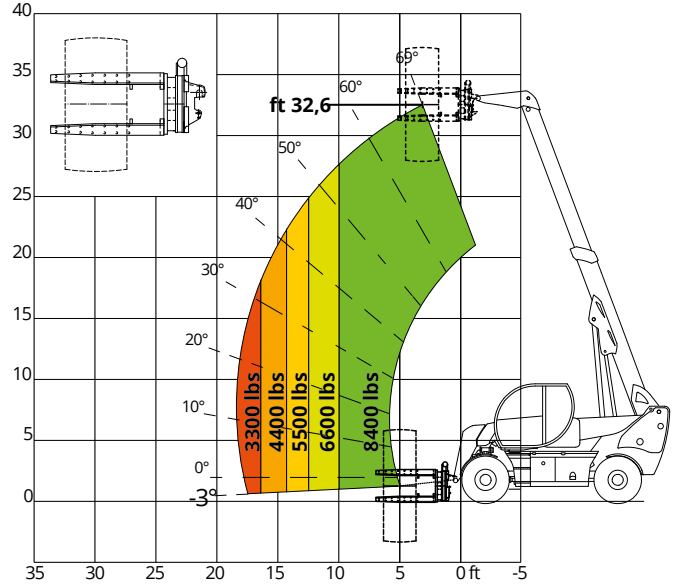
LOAD CHARTS

HTH 10.10

LOAD CHART WITH FORKS

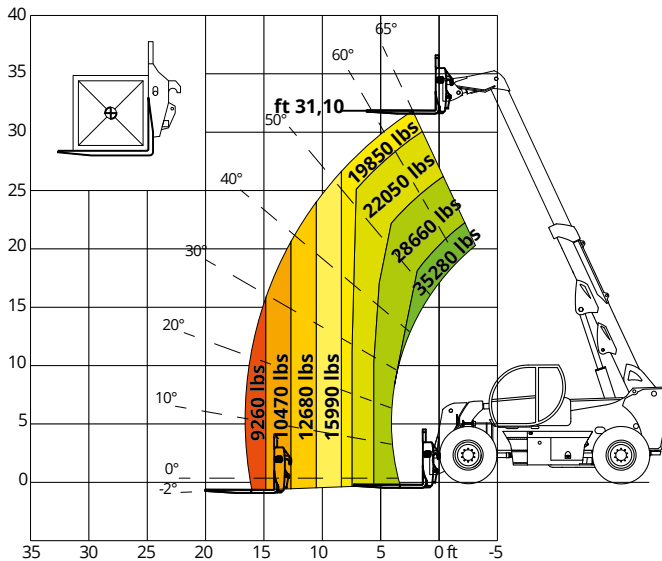


LOAD CHART WITH TIRES CLAMP MODEL TC3,8-49

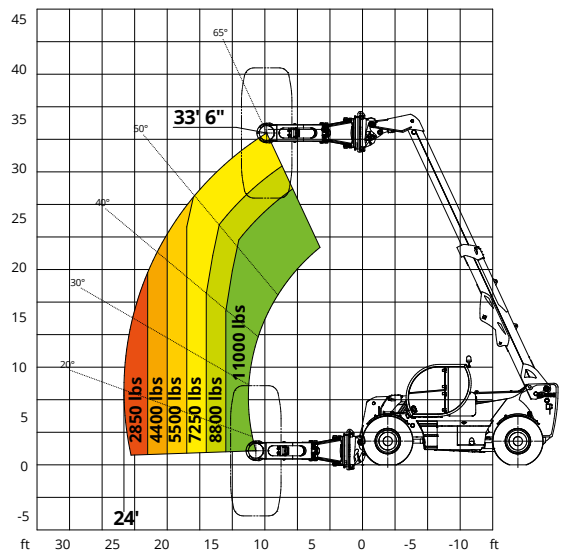


HTH 16.10

LOAD CHART WITH FORKS

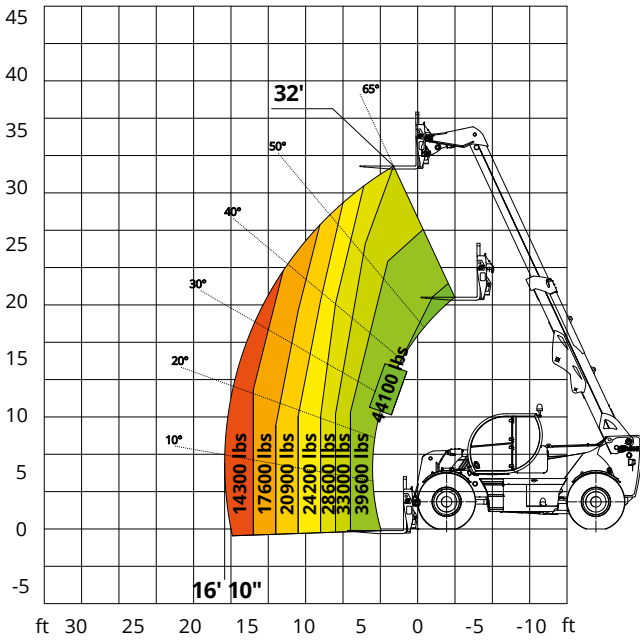


LOAD CHART WITH TIRES CLAMP MODEL TC 08.63

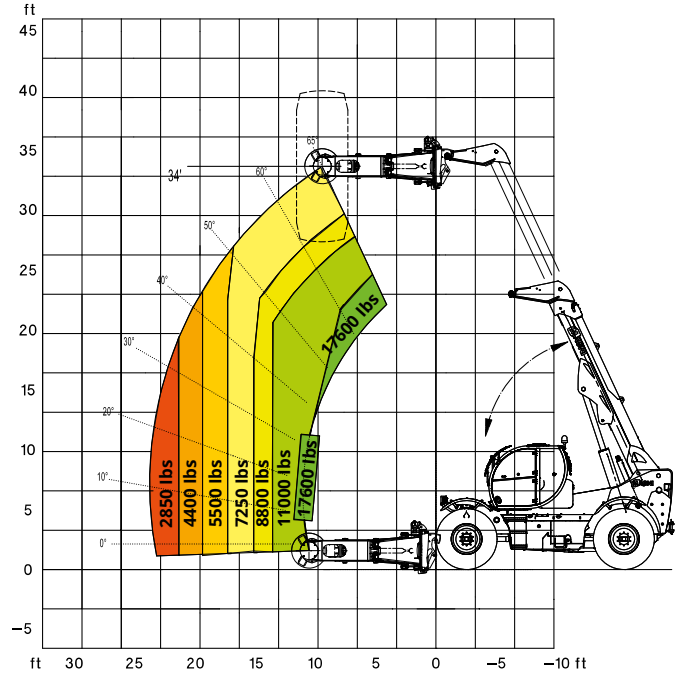


HTH 20.10

LOAD CHART WITH FORKS

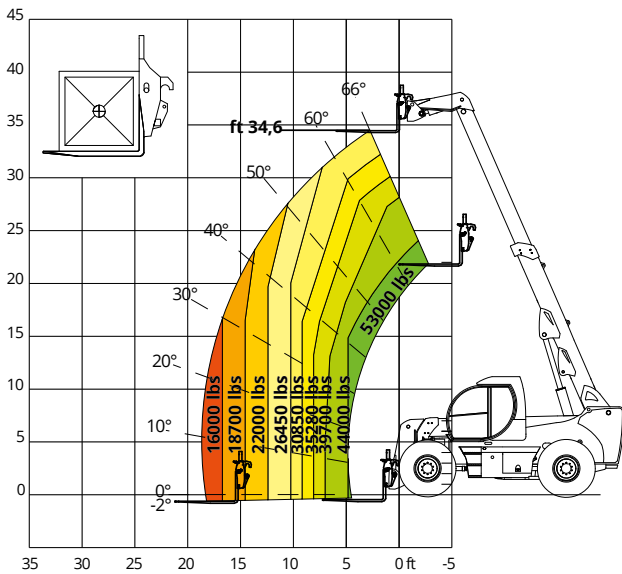


LOAD CHART WITH TIRES CLAMP MODEL TC 08.63

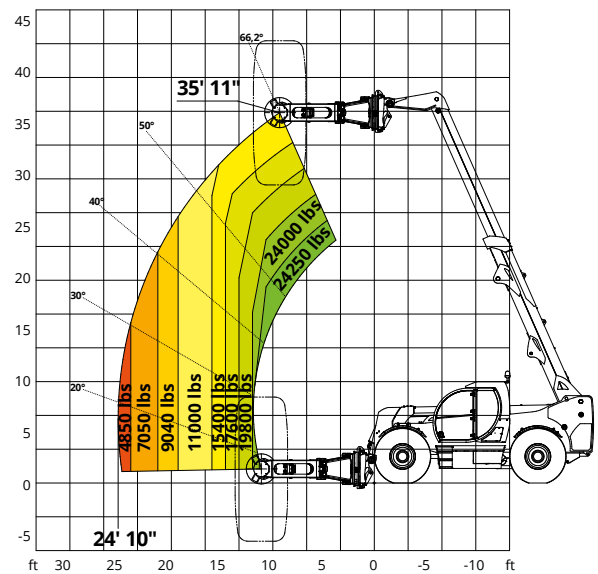


HTH 24.11

LOAD CHART WITH FORKS



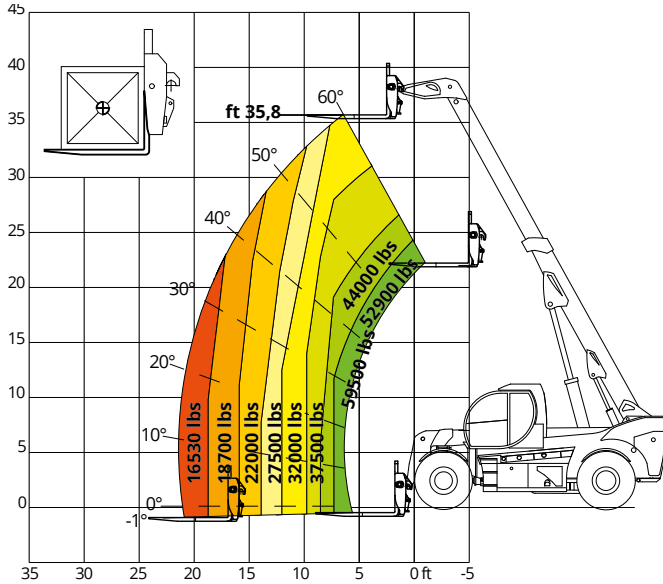
LOAD CHART WITH TIRES CLAMP MODEL TC 16.63



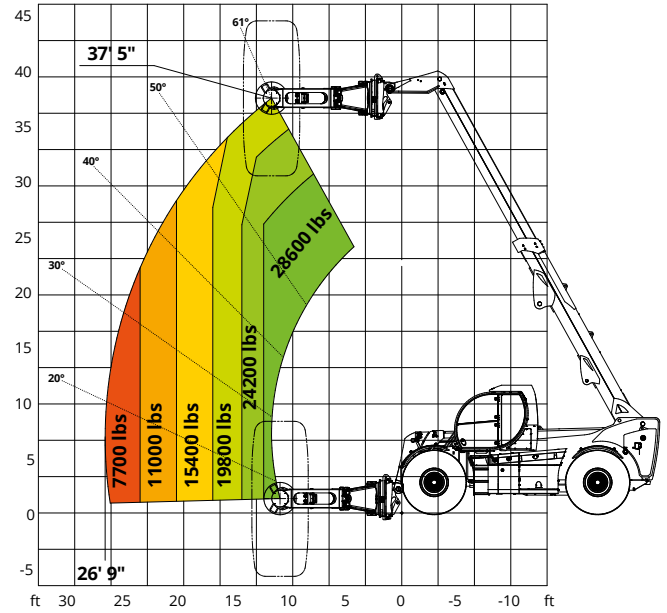
LOAD CHARTS

HTH 27.11

LOAD CHART WITH FORKS

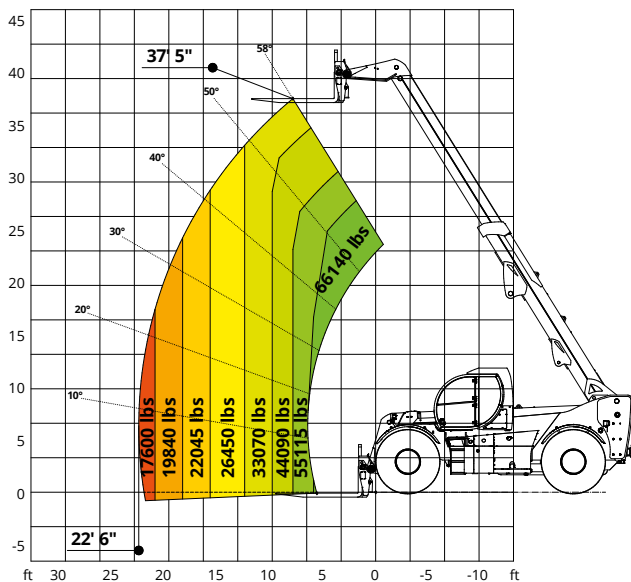


LOAD CHART WITH TIRES CLAMP MODEL TC 16.63

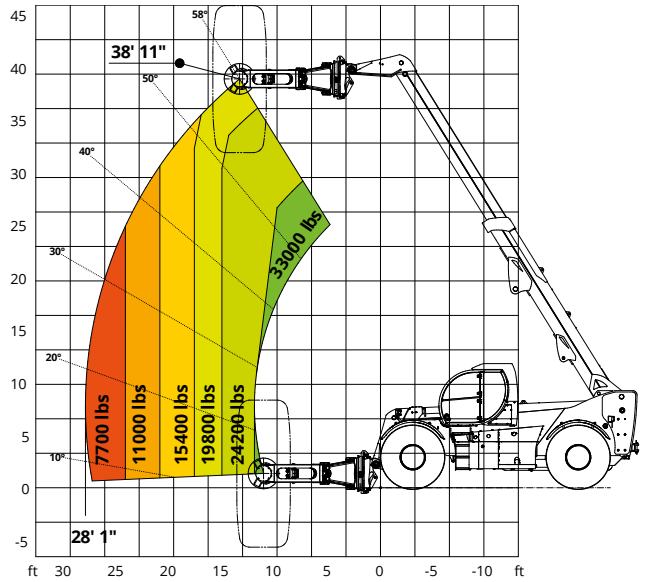


HTH 30.12

LOAD CHART WITH FORKS

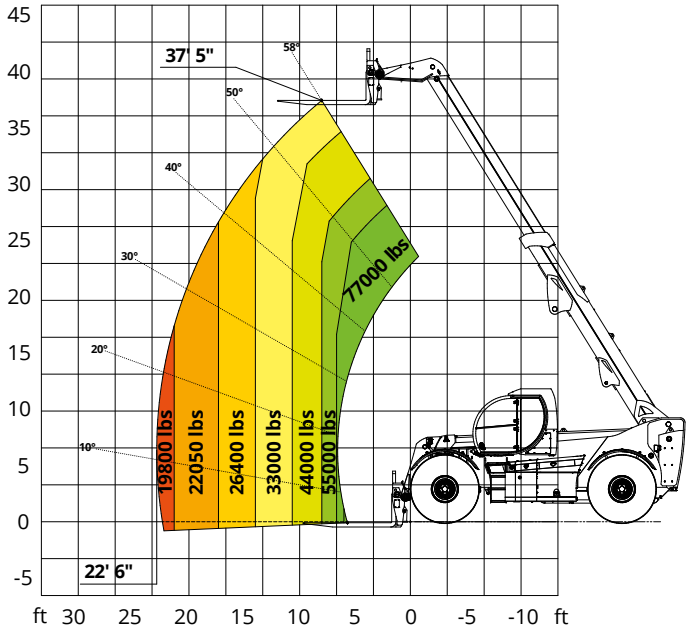


LOAD CHART WITH TIRES CLAMP MODEL TC 16.63

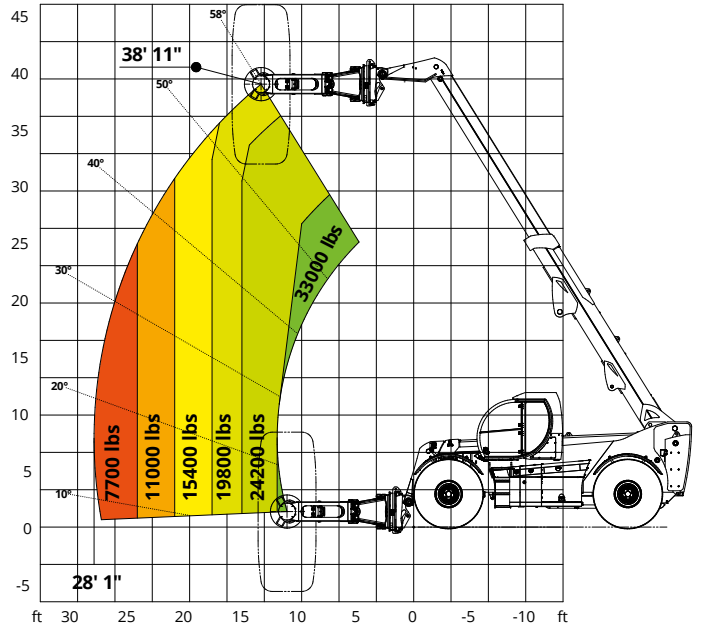


HTH 35.12

LOAD CHART WITH FORKS

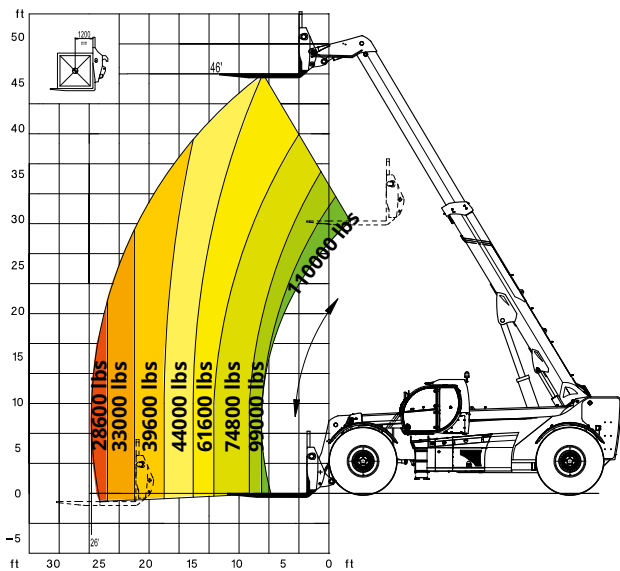


LOAD CHART WITH TIRES CLAMP MODEL TC 16.63

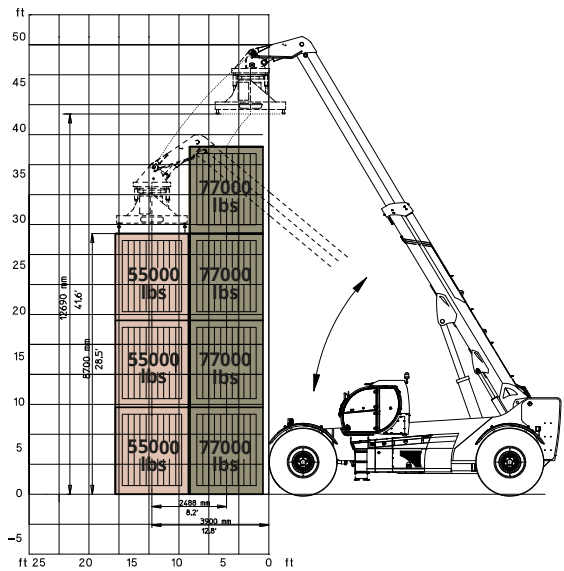


HTH 50.14

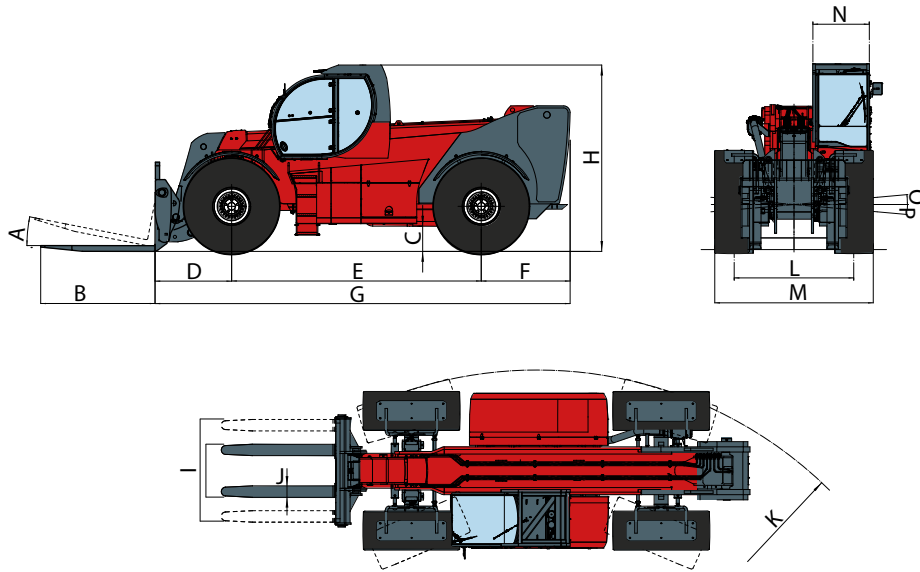
LOAD CHART WITH FORKS



LOAD CHART WITH CONTAINER SPREADER 20"-40"



MACHINE DIMENSIONS



DIMENSIONS

		HTH 10.10	HTH 16.10	HTH 20.10	HTH 24.11	HTH 27.11	HTH 30.12	HTH 35.12	HTH 50.14
A		14°	12°	12°	12°	11°	11°	11°	11°
B *		59	59	59	71	94	94	94	94
C *		15	17	16	17	21	22	22	24
D *		39	45	34	50	53	57	57	63
E *		130	157	157	157	177	189	189	272
F *		54	48	50	65	67	67	67	67
G *		223	251	253	272	297	313	313	421
H *		118	122	124	118	139	142	142	150
I *	max	68	79	79	78	94	78	78	on request
	min	32	46	44	49	56	53	53	
J *		8	8	8	10	12	12	13	on request
K *		161	199	226	213	335	382	382	378
L *		81	79	81	94	88	89	89	101
M *		100	100	100	117	117	118	118	126
N *		41	41	41	41	41	41	41	41
O		8°	8°	8°	10°	5°	5°	5°	5°
P		8°	8°	8°	10°	5°	5°	5°	5°

*measurements expressed in inches

www.magnith.com

Magni America, LLC

616 West 1st Avenue, Roselle, NJ 07203
Ph: 908-280-8899

Magni Americas, Inc

9154 Woodend Rd Ste H Edwardsville, KS 66111
Ph: 913-602-4217

Toll-free
+1-833-MagniUS